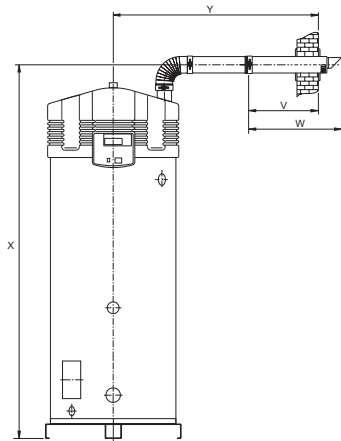


Dimensions configurations SGE 40 / 60

Wall duct concentric

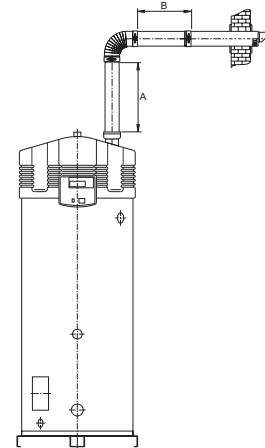


	SGE 40	SGE 60
	Ø100/150	Ø100/150
V	550	550
W	790	790
X	2335	2335
Y	1475	1475
Y *	1025	1025

- Dimensions in mm
- * Dimensions without concentric tube between the bend and the wall duct

Note:
Horizontal flue runs must be installed with a fall of at least 5cm per metre

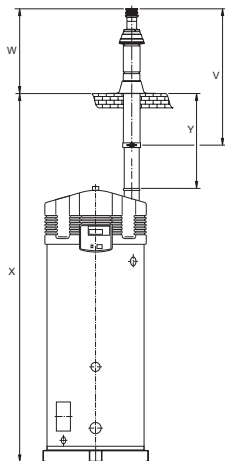
Wall duct concentric



	SGE 40		SGE 60	
	min.	max.	min.	max.
A	0	40000	0	40000
B	0	40000	0	40000
A+B	< 40000		< 40000	
bends	max. 7x45°/90°		max. 7x45°/90°	

- Dimensions in mm

Roof duct concentric

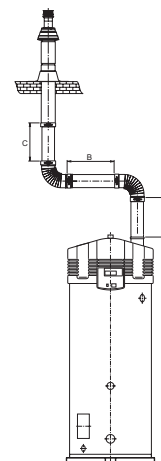


	SGE 40	SGE 60
	Ø100/150	Ø100/150
V	1500	1500
W	1035	1035
X	3585	3585
X **	2520	2520
Y	1415	1415
Y **	465	465

- Dimensions in mm
- ** Dimensions without concentric tube between the bend and the wall duct

Note:
Horizontal flue runs must be installed with a fall of at least 5cm per metre

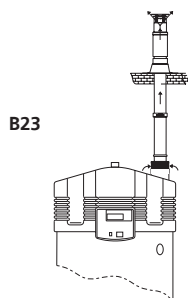
Roof duct concentric



	SGE 40		SGE 60	
	min.	max.	min.	max.
A	0	40000	0	40000
B	0	40000	0	40000
C	0	40000	0	40000
A+B+C	< 40000		< 40000	
bends	max. 7x45°/90°		max. 7x45°/90°	

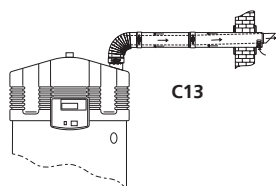
- Dimensions in mm

Materials SGE category B23 incl. art.no.



CATEGORY B23		
Description	SGE 40 Ø100/150	SGE 60 Ø100/150
Air inlet basket	0304872	0304872
Roof flue terminal	0305040	0305040
Flange roof terminal	0307173	0307173

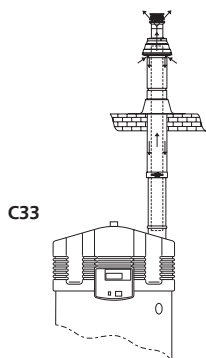
Materials SGE category C13 incl. art.no.



CATEGORY C13		
Description	SGE 40 Ø100/150	SGE 60 Ø100/150
Wall flue terminal	0302504	0302504
Wall flue terminal set*	0302505	0302505
Conc. bend 45°	0311454	0311454
Conc. bend 90°	0302502	0302502
Conc. tube 500 mm	0302499	0302499
Conc. tube 1000 mm	0311450	0311450
Conc. tube 1500 mm	0311451	0311451
Clamping strip Y-piece	0302506	0302506
Adapter conc./conc.	0306188 (Ø100/150 - Ø130/200)	0306188 (Ø100/150 - Ø130/200)
	0304204 (Ø100/150 - 2xØ100)	0304204 (Ø100/150 - 2xØ100)
Adapter conc./par.	0307135 (Ø100/150 - 2xØ130)	0307135 (Ø100/150 - 2xØ130)
	0307142 (2xØ100 - Ø100/150)	0307142 (2xØ100 - Ø100/150)
Adapter par./conc.	0307142 (2xØ100 - Ø100/150)	0307142 (2xØ100 - Ø100/150)
Measurement unit	0303854	0303854

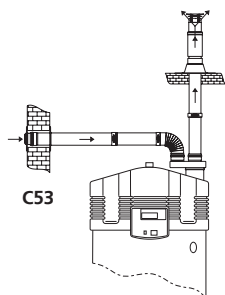
* incl. 2 wall flanges and clamping strip.

Materials SGE category C33 incl. art.no.



CATEGORY C33		
Description	SGE 40 Ø100/150	SGE 60 Ø100/150
Roof flue terminal set	0311463	0311463
Roof flue terminal	0311458	0311458
Flange roof terminal	0302509	0302509
Conc. bend 45°	0311454	0311454
Conc. bend 90°	0302502	0302502
Conc. tube 500 mm	0302499	0302499
Conc. tube 1000 mm	0311450	0311450
Conc. tube 1500 mm	0311451	0311451
Clamping strip Y-piece	0302506	0302506
Adapter conc./conc.	0306188 (Ø100/150 - Ø130/200)	0306188 (Ø100/150 - Ø130/200)
Adapter conc./par.	0304204 (Ø100/150 - 2xØ100)	0304204 (Ø100/150 - 2xØ100)
	0307135 (Ø100/150 - 2xØ130)	0307135 (Ø100/150 - 2xØ130)
Adapter par./conc.	0307142 (2xØ100 - Ø100/150)	0307142 (2xØ100 - Ø100/150)
Measurement unit	0303854	0303854

Materials SGE category C53 incl. art.no.



CATEGORY C53		
Description	SGE 40 Ø100/150	SGE 60 Ø100/150
Wall flue terminal set*	0305039 (Ø100)	0305039 (Ø100)
	0307178 (Ø130)	0307178 (Ø130)
Roof flue terminal	0305040 (Ø100)	0305040 (Ø100)
	0307175 (Ø130)	0307175 (Ø130)
Flange roof terminal	0307173 (Ø100)	0307173 (Ø100)
Adapter conc./par.	0304204 (Ø100/150 - 2xØ100)	0304204 (Ø100/150 - 2xØ100)
	0307135 (Ø100/150 - 2xØ130)	0307135 (Ø100/150 - 2xØ130)

* incl. 2 wall flanges.

Additional flue gas discharge material SGE



ROOF FLUE TERMINAL - PARALLEL (ALU)

Description	SGE 40	SGE 60
Ø 100	0305040	0305040



ROOF FLUE TERMINAL SET - CONCENTRIC (ALU)

Description	SGE 40	SGE 60
Ø 100 / 150	0311463	0311463

○ Incl. flange and concentric tube (1m)

ROOF DUCT EXTENSION PIPE

Description	SGE 40	SGE 60
Ø 100/150 450mm	0311291	0311291
Ø 100/150 950mm	0311292	0311292



FLANGE - PAR. ROOF TERMINAL (ALU)

Description		SGE 40	SGE 60
Terminal	Flange		
Ø 100	Ø 120	0307173	0307173
Ø 100 / 150	Ø 170	0302509	0302509



ROOF TILE FOR CONC. ROOF TERMINAL (ALU)

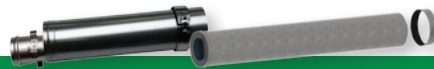
Description		SGE 40	SGE 60
Ø 100 / 150	Angle 25°-45°	0306017	0306017



WALL FLUE TERMINAL SET - CONCENTRIC (ALU)

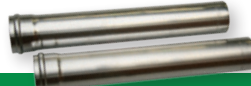
Description		SGE 40	SGE 60
Ø 100 / 150		0302504	0302504

○ Incl. concentric tube (0.5m), bend (90°) and wall flanges



CONCENTRIC TUBE (ALU)

Description		SGE 40	SGE 60
Ø 100 / 150	L = 500 mm	0302499	0302499
Ø 100 / 150	L = 1000 mm	0311450	0311450
Ø 100 / 150	L = 1500 mm	0311451	0311451



TUBE - PARALLEL (ALU)

Description		SGE 40	SGE 60
Ø 100	L = 500 mm	0307160	0307160
Ø 100	L = 1000 mm	0307161	0307161

○ Set of 2 pieces



BEND - CONCENTRIC (ALU)

Description		SGE 40	SGE 60
Ø 100 / 150	Angle 90°	0302502	0302502
Ø 100 / 150	Angle 45°	0311454	0311454



BEND - PARALLEL (ALU)

Description		SGE 40	SGE 60
Ø 100	Angle 45°	0310197	0310197



BEND - PARALLEL (ALU)

Description		SGE 40	SGE 60
Ø 100	Angle 87/90°	0307164	0307164



T-CONCENTRIC TUBE (ALU)

Description		SGE 40	SGE 60
Ø 100 / 150		0305244	0305244



ADAPTER - CONC. TO CONC. (ALU)

Description		SGE 40	SGE 60
from	to		
Ø 100 / 150	Ø 130 / 200	0306188	0306188



ADAPTER - PAR. TO CONC. (ALU)

Description		SGE 40	SGE 60
from	to		
2 x Ø 100	1 x Ø 150	0307142	0307142



ADAPTER - PAR. TO PAR. (ALU)

Description		SGE 40	SGE 60
from	to		
Ø 100	Ø 130	0307168	0307168



ADAPTER - CONC. TO PAR. (ALU)

Description		SGE 40	SGE 60
from	to		
Ø 100 / 150	2 x Ø 100	0304204	0304204



AIR INLET BASKET (ALU)

Description	SGE 40	SGE 60
Ø 100 / 150	0304872	0304872



MEASUREMENT UNIT - CONCENTRIC (ALU)

Description	SGE 40	SGE 60
Ø 100 / 150	0303854	0303854



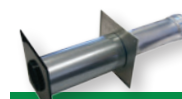
CLAMPING STRIP - Y-TUBE WITH TUBE (ALU)

Description	SGE 40	SGE 60
Ø 154	0304199	0304199



CLAMPING STRIP - TUBE WITH TUBE (ALU)

Description	SGE 40	SGE 60
Ø 150	0302506	0302506



WALL FLUE TERMINAL - PARALLEL (ALU)

Description	SGE 40	SGE 60
Ø 100	0305039	0305039
Ø 130	0307178	0307178

○ Incl. wall flanges