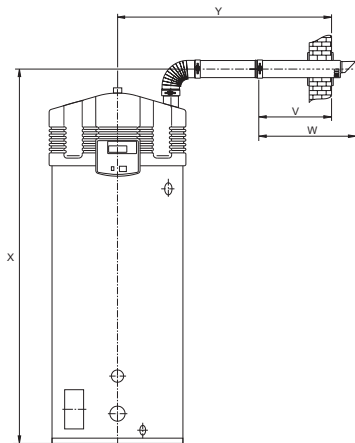


## Dimensions configurations BFC 28 / 30 / 50 / 60

Wall duct concentric

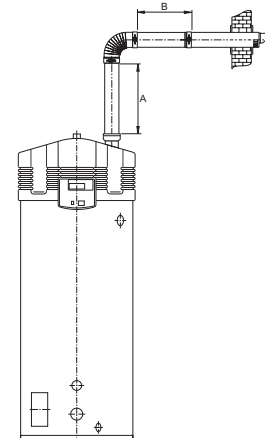


|      | BFC 28   | BFC 30   | BFC 50   | BFC 60   |
|------|----------|----------|----------|----------|
|      | Ø100/150 | Ø100/150 | Ø100/150 | Ø100/150 |
| V    | 550      | 550      | 550      | 550      |
| W    | 725      | 790      | 790      | 790      |
| X    | 1535     | 2075     | 2075     | 2075     |
| Y    | 1460     | 1480     | 1480     | 1480     |
| Y ** | 1010     | 1030     | 1030     | 1030     |

- Dimensions in mm
- \*\* Dimensions without concentric tube between the bend and the wall duct

**Note:**  
Horizontal flue runs must be installed with a fall of at least 5cm per metre

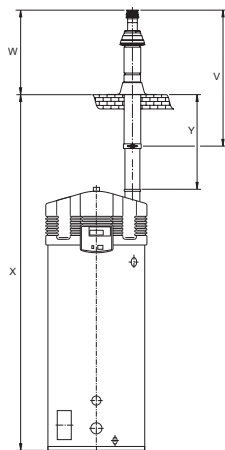
Wall duct concentric



|       | BFC 28         |       | BFC 30         |       | BFC 50         |       | BFC 60         |       |
|-------|----------------|-------|----------------|-------|----------------|-------|----------------|-------|
|       | min.           | max.  | min.           | max.  | min.           | max.  | min.           | max.  |
| A     | 0              | 40000 | 0              | 40000 | 0              | 40000 | 0              | 40000 |
| B     | 0              | 40000 | 0              | 40000 | 0              | 40000 | 0              | 40000 |
| A+B   | < 40000        |       | < 40000        |       | < 40000        |       | < 40000        |       |
| bends | max. 7x45°/90° |       | max. 7x45°/90° |       | max. 7x45°/90° |       | max. 7x45°/90° |       |

- Dimensions in mm

Roof duct concentric

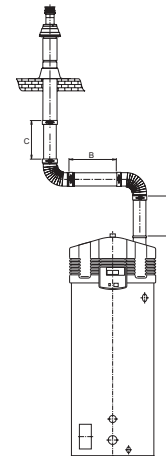


|       | BFC 28   | BFC 30   | BFC 50   | BFC 60   |
|-------|----------|----------|----------|----------|
|       | Ø100/150 | Ø100/150 | Ø100/150 | Ø100/150 |
| V     | 1305     | 1500     | 1500     | 1500     |
| W     | 680      | 1035     | 1035     | 1035     |
| X     | 2965     | 3325     | 3325     | 3325     |
| X *** | 2015     | 2375     | 2375     | 2375     |
| Y     | 1575     | 1415     | 1415     | 1415     |
| Y *** | 625      | 465      | 465      | 465      |

- Dimensions in mm
- \*\*\* Dimensions without concentric tube between the bend and the wall duct

**Note:**  
Horizontal flue runs must be installed with a fall of at least 5cm per metre

Roof duct concentric

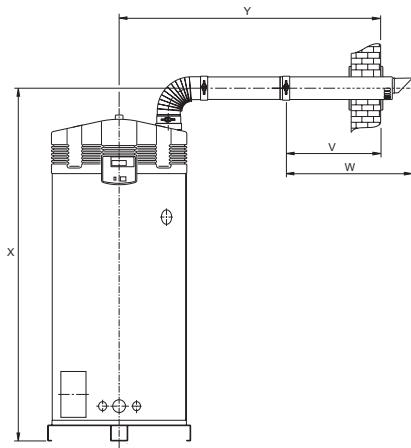


|       | BFC 28         |       | BFC 30         |       | BFC 50         |       | BFC 60         |       |
|-------|----------------|-------|----------------|-------|----------------|-------|----------------|-------|
|       | min.           | max.  | min.           | max.  | min.           | max.  | min.           | max.  |
| A     | 0              | 40000 | 0              | 40000 | 0              | 40000 | 0              | 40000 |
| B     | 0              | 40000 | 0              | 40000 | 0              | 40000 | 0              | 40000 |
| C     | 0              | 40000 | 0              | 40000 | 0              | 40000 | 0              | 40000 |
| A+B+C | < 40000        |       | < 40000        |       | < 40000        |       | < 40000        |       |
| bends | max. 7x45°/90° |       | max. 7x45°/90° |       | max. 7x45°/90° |       | max. 7x45°/90° |       |

- Dimensions in mm

# Dimensions configurations BFC 80 / 100 / 120

Wall duct concentric

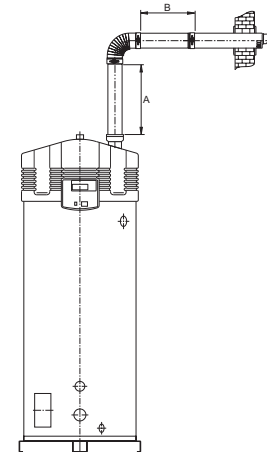


|      | BFC 80   | BFC 100  | BFC 120  |
|------|----------|----------|----------|
|      | Ø130/200 | Ø130/200 | Ø130/200 |
| V    | 640      | 640      | 640      |
| W    | 940      | 940      | 940      |
| X    | 2230     | 2230     | 2230     |
| Y    | 1620     | 1620     | 1620     |
| Y ** | 1170     | 1170     | 1170     |

• Dimensions in mm  
 \*\* Dimensions without concentric tube between the bend and the wall duct

**Note:**  
 Horizontal flue runs must be installed with a fall of at least 5cm per metre

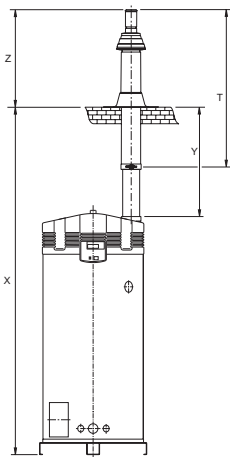
Wall duct concentric



|       | BFC 80         |       | BFC 100        |       | BFC 120        |       |
|-------|----------------|-------|----------------|-------|----------------|-------|
|       | min.           | max.  | min.           | max.  | min.           | max.  |
| A     | 0              | 15000 | 0              | 15000 | 0              | 15000 |
| B     | 0              | 15000 | 0              | 15000 | 0              | 15000 |
| A+B   | < 15000        |       | < 15000        |       | < 15000        |       |
| bends | max. 4x45°/90° |       | max. 4x45°/90° |       | max. 4x45°/90° |       |

• Dimensions in mm

Roof duct concentric



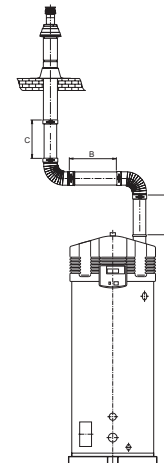
|       | BFC 80   | BFC 100  | BFC 120  |
|-------|----------|----------|----------|
|       | Ø130/200 | Ø130/200 | Ø130/200 |
| V     | 1730     | 1730     | 1730     |
| W     | 1120     | 1120     | 1120     |
| X     | 3620     | 3620     | 3620     |
| X *** | 2670     | 2670     | 2670     |
| Y     | 1560     | 1560     | 1560     |
| Y *** | 610      | 610      | 610      |

• Dimensions in mm  
 \*\*\* Dimensions without concentric tube between the bend and the wall duct

**Note:**  
 Horizontal flue runs must be installed with a fall of at least 5cm per metre

\* The SGS is delivered on a metal pallet, the height can vary

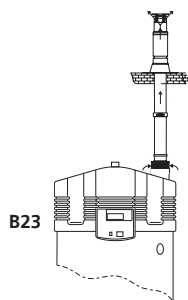
Roof duct concentric



|       | BFC 80         |       | BFC 100        |       | BFC 120        |       |
|-------|----------------|-------|----------------|-------|----------------|-------|
|       | min.           | max.  | min.           | max.  | min.           | max.  |
| A     | 0              | 15000 | 0              | 15000 | 0              | 15000 |
| B     | 0              | 15000 | 0              | 15000 | 0              | 15000 |
| C     | 0              | 15000 | 0              | 15000 | 0              | 15000 |
| A+B+C | < 15000        |       | < 15000        |       | < 15000        |       |
| bends | max. 4x45°/90° |       | max. 4x45°/90° |       | max. 4x45°/90° |       |

• Dimensions in mm

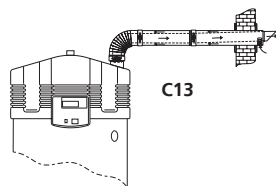
# Materials BFC category B23 incl. art.no.



| CATEGORY B23         |                    |                    |                    |                    |                    |                     |                     |
|----------------------|--------------------|--------------------|--------------------|--------------------|--------------------|---------------------|---------------------|
| Description          | BFC 28<br>Ø100/150 | BFC 30<br>Ø100/150 | BFC 50<br>Ø100/150 | BFC 60<br>Ø100/150 | BFC 80<br>Ø130/200 | BFC 100<br>Ø130/200 | BFC 120<br>Ø130/200 |
| Air inlet basket     | 0304872            | 0304872            | 0304872            | 0304872            | 0307176            | 0307176             | 0307176             |
| Roof flue terminal   | 0305040            | 0305040            | 0305040            | 0305040            | 0307175            | 0307175             | 0307175             |
| Flange roof terminal | 0307173            | 0307173            | 0307173            | 0307173            | 0307174            | 0307174             | 0307174             |

From september 1st 2009, the BFC 28 is standard equipped with Ø100/150. An adapter from Ø80/125 is available (Art. No. 0305009).

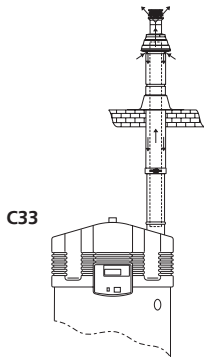
# Materials BFC category C13 incl. art.no.



| CATEGORY C13            |                                  |                                  |                                  |                                  |                                  |                                  |                                  |
|-------------------------|----------------------------------|----------------------------------|----------------------------------|----------------------------------|----------------------------------|----------------------------------|----------------------------------|
| Description             | BFC 28<br>Ø100/150               | BFC 30<br>Ø100/150               | BFC 50<br>Ø100/150               | BFC 60<br>Ø100/150               | BFC 80<br>Ø130/200               | BFC 100<br>Ø130/200              | BFC 120<br>Ø130/200              |
| Wall flue terminal      | 0302504                          | 0302504                          | 0302504                          | 0302504                          | 0311465                          | 0311465                          | 0311465                          |
| Wall flue terminal set* | 0302505                          | 0302505                          | 0302505                          | 0302505                          | 0302313                          | 0302313                          | 0302313                          |
| Conc. bend 45°          | 0311454                          | 0311454                          | 0311454                          | 0311454                          | 0311455                          | 0311455                          | 0311455                          |
| Conc. bend 90°          | 0302502                          | 0302502                          | 0302502                          | 0302502                          | 0311456                          | 0311456                          | 0311456                          |
| Conc. tube 500 mm       | 0302499                          | 0302499                          | 0302499                          | 0302499                          | 0302301                          | 0302301                          | 0302301                          |
| Conc. tube 1000 mm      | 0311450                          | 0311450                          | 0311450                          | 0311450                          | 0311452                          | 0311452                          | 0311452                          |
| Conc. tube 1500 mm      | 0311451                          | 0311451                          | 0311451                          | 0311451                          | 0311453                          | 0311453                          | 0311453                          |
| Clamping strip Y-piece  | 0302506                          | 0302506                          | 0302506                          | 0302506                          | 0302305                          | 0302305                          | 0302305                          |
| Adapter conc./conc.     | 0306188<br>(Ø100/150 - Ø130/200) | 0306188<br>(Ø100/150 - Ø130/200) | 0306188<br>(Ø100/150 - Ø130/200) | 0306188<br>(Ø100/150 - Ø130/200) | 0306188<br>(Ø100/150 - Ø130/200) | 0306188<br>(Ø100/150 - Ø130/200) | 0306188<br>(Ø100/150 - Ø130/200) |
| Adapter conc./par.      | 0304204<br>(Ø100/150 - 2xØ100)   | 0304204<br>(Ø100/150 - 2xØ100)   | 0304204<br>(Ø100/150 - 2xØ100)   | 0304204<br>(Ø100/150 - 2xØ100)   | 0309605<br>(Ø130/200 - 2xØ130)   | 0309605<br>(Ø130/200 - 2xØ130)   | 0309605<br>(Ø130/200 - 2xØ130)   |
|                         | 0307135<br>(Ø100/150 - 2xØ130)   | 0307135<br>(Ø100/150 - 2xØ130)   | 0307135<br>(Ø100/150 - 2xØ130)   | 0307135<br>(Ø100/150 - 2xØ130)   | -                                | -                                | -                                |
| Adapter par./conc.      | 0307142<br>(2xØ100 - Ø100/150)   | 0307142<br>(2xØ100 - Ø100/150)   | 0307142<br>(2xØ100 - Ø100/150)   | 0307142<br>(2xØ100 - Ø100/150)   | -                                | -                                | -                                |
| Measurement unit        | 0303854<br>(Ø100/150)            | 0303854<br>(Ø100/150)            | 0303854<br>(Ø100/150)            | 0303854<br>(Ø100/150)            | 0303855<br>(Ø130/200)            | 0303855<br>(Ø130/200)            | 0303855<br>(Ø130/200)            |

\* incl. 2 wall flanges and clamping strip.

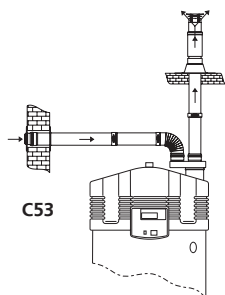
# Materials BFC category C33 incl. art.no.



| CATEGORY C33            |                                  |                                  |                                  |                                  |                                  |                                  |                                  |
|-------------------------|----------------------------------|----------------------------------|----------------------------------|----------------------------------|----------------------------------|----------------------------------|----------------------------------|
| Description             | BFC 28<br>Ø100/150               | BFC 30<br>Ø100/150               | BFC 50<br>Ø100/150               | BFC 60<br>Ø100/150               | BFC 80<br>Ø130/200               | BFC 100<br>Ø130/200              | BFC 120<br>Ø130/200              |
| Roof flue terminal      | 0311463                          | 0311463                          | 0311463                          | 0311463                          | 0311464                          | 0311464                          | 0311464                          |
| Roof flue terminal set* | 0311458                          | 0311458                          | 0311458                          | 0311458                          | 0306390                          | 0306390                          | 0306390                          |
| Flange roof terminal    | 0302509                          | 0302509                          | 0302509                          | 0302509                          | 0302328                          | 0302328                          | 0302328                          |
| Conc. bend 45°          | 0311454                          | 0311454                          | 0311454                          | 0311454                          | 0311455                          | 0311455                          | 0311455                          |
| Conc. bend 90°          | 0302502                          | 0302502                          | 0302502                          | 0302502                          | 0311456                          | 0311456                          | 0311456                          |
| Conc. tube 500 mm       | 0302499                          | 0302499                          | 0302499                          | 0302499                          | 0302301                          | 0302301                          | 0302301                          |
| Conc. tube 1000 mm      | 0311450                          | 0311450                          | 0311450                          | 0311450                          | 0311452                          | 0311452                          | 0311452                          |
| Conc. tube 1500 mm      | 0311451                          | 0311451                          | 0311451                          | 0311451                          | 0311453                          | 0311453                          | 0311453                          |
| Clamping strip Y-piece  | 0302506                          | 0302506                          | 0302506                          | 0302506                          | 0302305                          | 0302305                          | 0302305                          |
| Adapter conc./conc.     | 0306188<br>(Ø100/150 - Ø130/200) | 0306188<br>(Ø100/150 - Ø130/200) | 0306188<br>(Ø100/150 - Ø130/200) | 0306188<br>(Ø100/150 - Ø130/200) | 0306188<br>(Ø100/150 - Ø130/200) | 0306188<br>(Ø100/150 - Ø130/200) | 0306188<br>(Ø100/150 - Ø130/200) |
| Adapter conc./par.      | 0304204<br>(Ø100/150 - 2xØ100)   | 0304204<br>(Ø100/150 - 2xØ100)   | 0304204<br>(Ø100/150 - 2xØ100)   | 0304204<br>(Ø100/150 - 2xØ100)   | 0309605<br>(Ø130/200 - 2xØ130)   | 0309605<br>(Ø130/200 - 2xØ130)   | 0309605<br>(Ø130/200 - 2xØ130)   |
|                         | 0307135<br>(Ø100/150 - 2xØ130)   | 0307135<br>(Ø100/150 - 2xØ130)   | 0307135<br>(Ø100/150 - 2xØ130)   | 0307135<br>(Ø100/150 - 2xØ130)   | -                                | -                                | -                                |
| Adapter par./conc.      | 0307142<br>(2xØ100 - Ø100/150)   | 0307142<br>(2xØ100 - Ø100/150)   | 0307142<br>(2xØ100 - Ø100/150)   | 0307142<br>(2xØ100 - Ø100/150)   | -                                | -                                | -                                |
| Measurement unit        | 0303854<br>(Ø100/150)            | 0303854<br>(Ø100/150)            | 0303854<br>(Ø100/150)            | 0303854<br>(Ø100/150)            | 0303855<br>(Ø130/200)            | 0303855<br>(Ø130/200)            | 0303855<br>(Ø130/200)            |

\* incl. 2 wall flanges and clamping strip.

# Materials BFC category C53 incl. art.no.



| CATEGORY C53            |                                |                                |                                |                                |                                |                                |                                |
|-------------------------|--------------------------------|--------------------------------|--------------------------------|--------------------------------|--------------------------------|--------------------------------|--------------------------------|
| Description             | BFC 28<br>Ø100/150             | BFC 30<br>Ø100/150             | BFC 50<br>Ø100/150             | BFC 60<br>Ø100/150             | BFC 80<br>Ø130/200             | BFC 100<br>Ø130/200            | BFC 120<br>Ø130/200            |
| Wall flue terminal set* | 0305039 (Ø100)                 | 0305039 (Ø100)                 | 0305039 (Ø100)                 | 0305039 (Ø100)                 | -                              | -                              | -                              |
|                         | 0307178 (Ø130)                 | 0307178 (Ø130)                 | 0307178 (Ø130)                 | 0307178 (Ø130)                 | 0307178 (Ø130)                 | 0307178 (Ø130)                 | 0307178 (Ø130)                 |
| Roof flue terminal      | 0305040 (Ø100)                 | 0305040 (Ø100)                 | 0305040 (Ø100)                 | 0305040 (Ø100)                 | 0307175 (Ø130)                 | 0307175 (Ø130)                 | 0307175 (Ø130)                 |
| Flange roof terminal    | 0307173 (Ø120)                 | 0307173 (Ø120)                 | 0307173 (Ø120)                 | 0307173 (Ø120)                 | -                              | -                              | -                              |
| Adapter conc./par.      | 0304204<br>(Ø100/150 - 2xØ100) | 0304204<br>(Ø100/150 - 2xØ100) | 0304204<br>(Ø100/150 - 2xØ100) | 0304204<br>(Ø100/150 - 2xØ100) | -                              | -                              | -                              |
|                         | 0307135<br>(Ø100/150 - 2xØ130) | 0307135<br>(Ø100/150 - 2xØ130) | 0307135<br>(Ø100/150 - 2xØ130) | 0307135<br>(Ø100/150 - 2xØ130) | 0309605<br>(Ø130/200 - 2xØ130) | 0309605<br>(Ø130/200 - 2xØ130) | 0309605<br>(Ø130/200 - 2xØ130) |
|                         |                                |                                |                                |                                |                                |                                |                                |

\* incl. 2 wall flanges.

From september 1st 2009, the BFC 28 is standard equipped with Ø100/150. An adapter from Ø80/125 is available (Art. No. 0305009).

# Additional flue gas discharge material BFC



## ROOF FLUE TERMINAL SET - CONCENTRIC (ALU)

| Description | BFC 28  | BFC 30  | BFC 50  | BFC 60  | BFC 80  | BFC 100 | BFC 120 |
|-------------|---------|---------|---------|---------|---------|---------|---------|
| Ø 100 / 150 | 0311463 | 0311463 | 0311463 | 0311463 | -       | -       | -       |
| Ø 130 / 200 | -       | -       | -       | -       | 0311464 | 0311464 | 0311464 |

○ Incl. flange and concentric tube (1m)



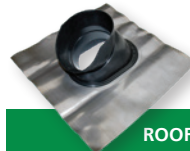
## ROOF FLUE TERMINAL - PARALLEL (ALU)

| Description | BFC 28  | BFC 30  | BFC 50  | BFC 60  | BFC 80  | BFC 100 | BFC 120 |
|-------------|---------|---------|---------|---------|---------|---------|---------|
| Ø 100       | 0305040 | 0305040 | 0305040 | 0305040 | -       | -       | -       |
| Ø 130       | -       | -       | -       | -       | 0307175 | 0307175 | 0307175 |



## FLANGE - PAR. ROOF TERMINAL (ALU)

| Description | BFC 28 | BFC 30  | BFC 50  | BFC 60  | BFC 80  | BFC 100 | BFC 120 |
|-------------|--------|---------|---------|---------|---------|---------|---------|
| Terminal    |        |         |         |         |         |         |         |
| Flange      |        |         |         |         |         |         |         |
| Ø 100       | Ø 120  | 0307173 | 0307173 | 0307173 | 0307173 | 0307174 | 0307174 |



## ROOF TILE FOR CONC. ROOF TERMINAL (ALU)

| Description | BFC 28  | BFC 30  | BFC 50  | BFC 60  | BFC 80  | BFC 100 | BFC 120 |
|-------------|---------|---------|---------|---------|---------|---------|---------|
| Terminal    |         |         |         |         |         |         |         |
| Angle       |         |         |         |         |         |         |         |
| Ø 100 / 150 | 25°-45° | 0306017 | 0306017 | 0306017 | 0306017 | -       | -       |



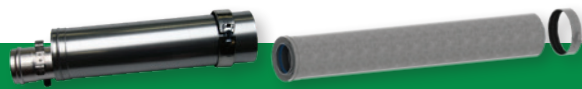
## WALL FLUE TERMINAL SET - CONCENTRIC (ALU)

| Description | BFC 28  | BFC 30  | BFC 50  | BFC 60  | BFC 80  | BFC 100 | BFC 120 |
|-------------|---------|---------|---------|---------|---------|---------|---------|
| Ø 100 / 150 | 0302504 | 0302504 | 0302504 | 0302504 | -       | -       | -       |
| Ø 130 / 200 | -       | -       | -       | -       | 0311465 | 0311465 | 0311465 |

○ Incl. concentric tube (0.5m), bend (90°) and wall flanges

## ROOF DUCT EXTENSION PIPE

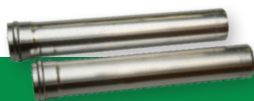
| Description | BFC 28 | BFC 30  | BFC 50  | BFC 60  | BFC 80  | BFC 100 | BFC 120 |
|-------------|--------|---------|---------|---------|---------|---------|---------|
| Ø 100/150   | 450mm  | 0311291 | 0311291 | 0311291 | 0311291 | -       | -       |
| Ø 100/150   | 950mm  | 0311292 | 0311292 | 0311292 | 0311292 | -       | -       |
| Ø 130/200   | 950mm  | -       | -       | -       | -       | 0311294 | 0311294 |



## CONCENTRIC TUBE (ALU)

| Description | BFC 28      | BFC 30  | BFC 50  | BFC 60  | BFC 80  | BFC 100 | BFC 120 |
|-------------|-------------|---------|---------|---------|---------|---------|---------|
| Ø 100 / 150 | L = 500 mm  | 0302499 | 0302499 | 0302499 | 0302499 | -       | -       |
| Ø 100 / 150 | L = 1000 mm | 0311450 | 0311450 | 0311450 | 0311450 | -       | -       |
| Ø 100 / 150 | L = 1500 mm | 0311451 | 0311451 | 0311451 | 0311451 | -       | -       |
| Ø 130 / 200 | L = 500 mm  | -       | -       | -       | -       | 0302301 | 0302301 |
| Ø 130 / 200 | L = 1000 mm | -       | -       | -       | -       | 0311452 | 0311452 |
| Ø 130 / 200 | L = 1500 mm | -       | -       | -       | -       | 0311453 | 0311453 |

○ Cuttable



## TUBE - PARALLEL (ALU)

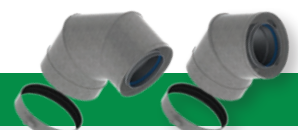
| Description | BFC 28      | BFC 30  | BFC 50  | BFC 60  | BFC 80  | BFC 100 | BFC 120 |
|-------------|-------------|---------|---------|---------|---------|---------|---------|
| Ø 100       | L = 500 mm  | 0307160 | 0307160 | 0307160 | 0307160 | -       | -       |
| Ø 100       | L = 1000 mm | 0307161 | 0307161 | 0307161 | 0307161 | -       | -       |
| Ø 130       | L = 500 mm  | -       | -       | -       | -       | 0306804 | 0306804 |
| Ø 130       | L = 1000 mm | -       | -       | -       | -       | 0306802 | 0306802 |

○ Set of 2 pieces



## BEND - CONCENTRIC (ALU)

| Description | BFC 28    | BFC 30  | BFC 50  | BFC 60  | BFC 80  | BFC 100 | BFC 120 |
|-------------|-----------|---------|---------|---------|---------|---------|---------|
| Ø 100 / 150 | Angle 90° | 0302502 | 0302502 | 0302502 | 0302502 | -       | -       |
| Ø 100 / 150 | Angle 45° | 0311454 | 0311454 | 0311454 | 0311454 | -       | -       |
| Ø 130 / 200 | Angle 90° | -       | -       | -       | -       | 0311456 | 0311456 |
| Ø 130 / 200 | Angle 45° | -       | -       | -       | -       | 0311455 | 0311455 |



# Additional flue gas discharge material BFC



## BEND - PARALLEL (ALU)

| Description |              | BFC 28  | BFC 30  | BFC 50  | BFC 60  | BFC 80  | BFC 100 | BFC 120 |
|-------------|--------------|---------|---------|---------|---------|---------|---------|---------|
| Ø 100       | Angle 45°    | 0310197 | 0310197 | 0310197 | 0310197 | -       | -       | -       |
| Ø 100       | Angle 87/90° | 0307164 | 0307164 | 0307164 | 0307164 | -       | -       | -       |
| Ø 130       | Angle 87/90° | -       | -       | -       | -       | 0306805 | 0306805 | 0306805 |
| Ø 130       | Angle 45°    | -       | -       | -       | -       | 0308026 | 0308026 | 0308026 |



## T-CONCENTRIC TUBE (ALU)

| Description | BFC 28  | BFC 30  | BFC 50  | BFC 60  | BFC 80  | BFC 100 | BFC 120 |
|-------------|---------|---------|---------|---------|---------|---------|---------|
| Ø 100 / 150 | 0305244 | 0305244 | 0305244 | 0305244 | -       | -       | -       |
| Ø 130 / 200 | -       | -       | -       | -       | 0307488 | 0307488 | 0307488 |



## AIR INLET BASKET (ALU)

| Description | BFC 28  | BFC 30  | BFC 50  | BFC 60  | BFC 80  | BFC 100 | BFC 120 |
|-------------|---------|---------|---------|---------|---------|---------|---------|
| Ø 100 / 150 | 0304872 | 0304872 | 0304872 | 0304872 | -       | -       | -       |
| Ø 130 / 200 | -       | -       | -       | -       | 0307176 | 0307176 | 0307176 |



## ADAPTER - CONC. TO PAR. (ALU)

| Description |           | BFC 28  | BFC 30  | BFC 50  | BFC 60  | BFC 80  | BFC 100 | BFC 120 |
|-------------|-----------|---------|---------|---------|---------|---------|---------|---------|
| from        | to        |         |         |         |         |         |         |         |
| Ø 100 / 150 | 2 x Ø 100 | 0304204 | 0304204 | 0304204 | 0304204 | -       | -       | -       |
| Ø 130 / 200 | 2 x Ø 130 | -       | -       | -       | -       | 0309605 | 0309605 | 0309605 |



## ADAPTER - CONC. TO CONC. (ALU)

| Description |             | BFC 28  | BFC 30  | BFC 50  | BFC 60  | BFC 80  | BFC 100 | BFC 120 |
|-------------|-------------|---------|---------|---------|---------|---------|---------|---------|
| from        | to          |         |         |         |         |         |         |         |
| Ø 100 / 150 | Ø 80 / 125  | 0309660 | -       | -       | -       | -       | -       | -       |
| Ø 100 / 150 | Ø 130 / 200 | 0306188 | 0306188 | 0306188 | 0306188 | 0306188 | 0306188 | 0306188 |



## ADAPTER - PAR. TO CONC. (PP)

| Description |                 | BFC 28  | BFC 30  | BFC 50  | BFC 60  | BFC 80  | BFC 100 | BFC 120 |
|-------------|-----------------|---------|---------|---------|---------|---------|---------|---------|
| from        | to              |         |         |         |         |         |         |         |
| 2 x Ø 100   | 1 x Ø 100 / 150 | 0307142 | 0307142 | 0307142 | 0307142 | -       | -       | -       |
| 2 x Ø 130   | 1 x Ø 200       | -       | -       | -       | -       | 0306801 | 0306801 | 0306801 |



## ADAPTER - PAR. TO PAR. (ALU)

| Description |       | BFC 28  | BFC 30  | BFC 50  | BFC 60  | BFC 80  | BFC 100 | BFC 120 |
|-------------|-------|---------|---------|---------|---------|---------|---------|---------|
| from        | to    |         |         |         |         |         |         |         |
| Ø 100       | Ø 130 | 0307168 | 0307168 | 0307168 | 0307168 | -       | -       | -       |
| Ø 130       | Ø 150 | -       | -       | -       | -       | 0307170 | 0307170 | 0307170 |



## CLAMPING STRIP - Y-PIECE WITH TUBE (ALU)

| Description | BFC 28  | BFC 30  | BFC 50  | BFC 60  | BFC 80  | BFC 100 | BFC 120 |
|-------------|---------|---------|---------|---------|---------|---------|---------|
| Ø 154       | 0309632 | 0309632 | 0309632 | 0309632 | 0309442 | 0309442 | 0309442 |



## CLAMPING STRIP - TUBE WITH TUBE (ALU)

| Description | BFC 28  | BFC 30  | BFC 50  | BFC 60  | BFC 80  | BFC 100 | BFC 120 |
|-------------|---------|---------|---------|---------|---------|---------|---------|
| Ø 150       | 0302506 | 0302506 | 0302506 | 0302506 | -       | -       | -       |
| Ø 200       | -       | -       | -       | -       | 0302305 | 0302305 | 0302305 |



## FLANGE - CONC. ROOF TERMINAL (ALU)

| Description |        | BFC 28  | BFC 30  | BFC 50  | BFC 60  | BFC 80  | BFC 100 | BFC 120 |
|-------------|--------|---------|---------|---------|---------|---------|---------|---------|
| Terminal    | Flange |         |         |         |         |         |         |         |
| Ø 100/150   | Ø 170  | 0302509 | 0302509 | 0302509 | 0302509 | -       | -       | -       |
| Ø 130/200   | Ø 210  | -       | -       | -       | -       | 0302328 | 0302328 | 0302328 |



## MEASUREMENT UNIT - CONCENTRIC (ALU)

| Description | BFC 28  | BFC 30  | BFC 50  | BFC 60  | BFC 80  | BFC 100 | BFC 120 |
|-------------|---------|---------|---------|---------|---------|---------|---------|
| Ø 100 / 150 | 0303854 | 0303854 | 0303854 | 0303854 | -       | -       | -       |
| Ø 130 / 200 | -       | -       | -       | -       | 0303855 | 0303855 | 0303855 |